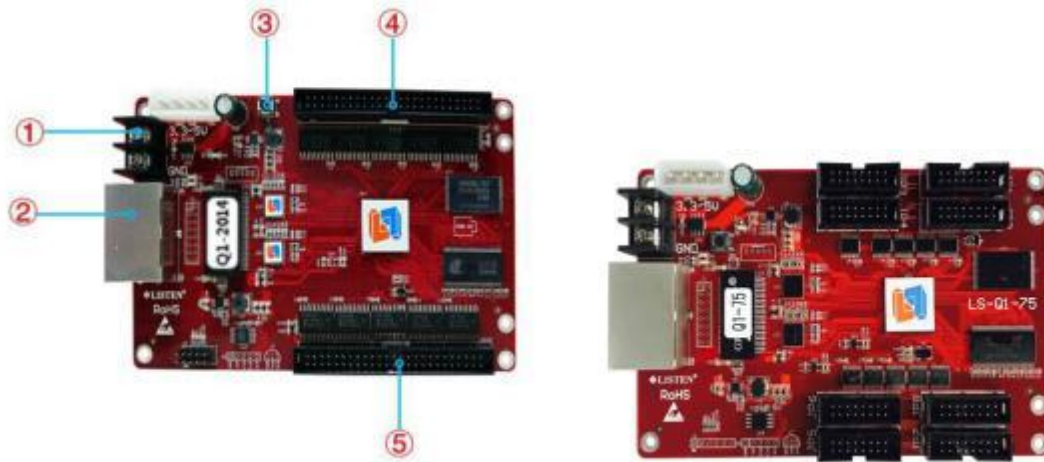

LS-Q1 Synchronous & Asynchronous Full color LED controller

Main features

- 1.Supporting single&double and full color, support RGB synchronous and asynchronous LED Display ;
2. 1GB(8Gb) memory for each pcs of LS-Q1 ;
3. 30fps Broadcast frame, smooth video, clear animation;
4. Can play after 1 sec when power on, no need to wait for long time to start;
5. Software has the Zoom function of video processor, can zoom any size between PC screen and LED display screen ;Can be used for stock exchange, bus station info, wedding scene application and so on;
6. Wonderful display quality, high refresh rate (16 KHz), high gray level (max.65536), high brightness;
7. Compatible for all normal led modules from current market, supporting special module like 12*24 pixels;
8. User-friendly software, supporting colorful text, animation as background, flash clock, video and so on;
9. Two gigabit LAN Ports can be used without limited, no input or output limited


Hardware picture

LS-Q1(2X50PIN)-2014, LS-Q1-75(8XHUB75)

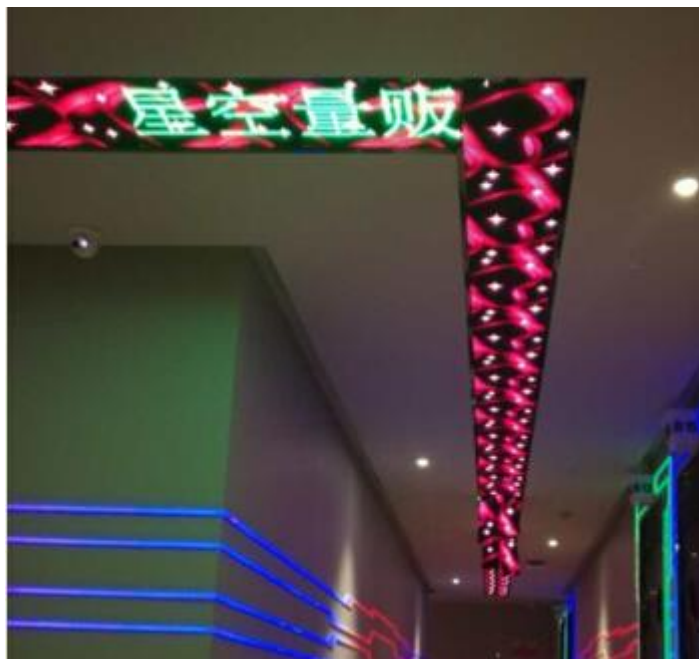
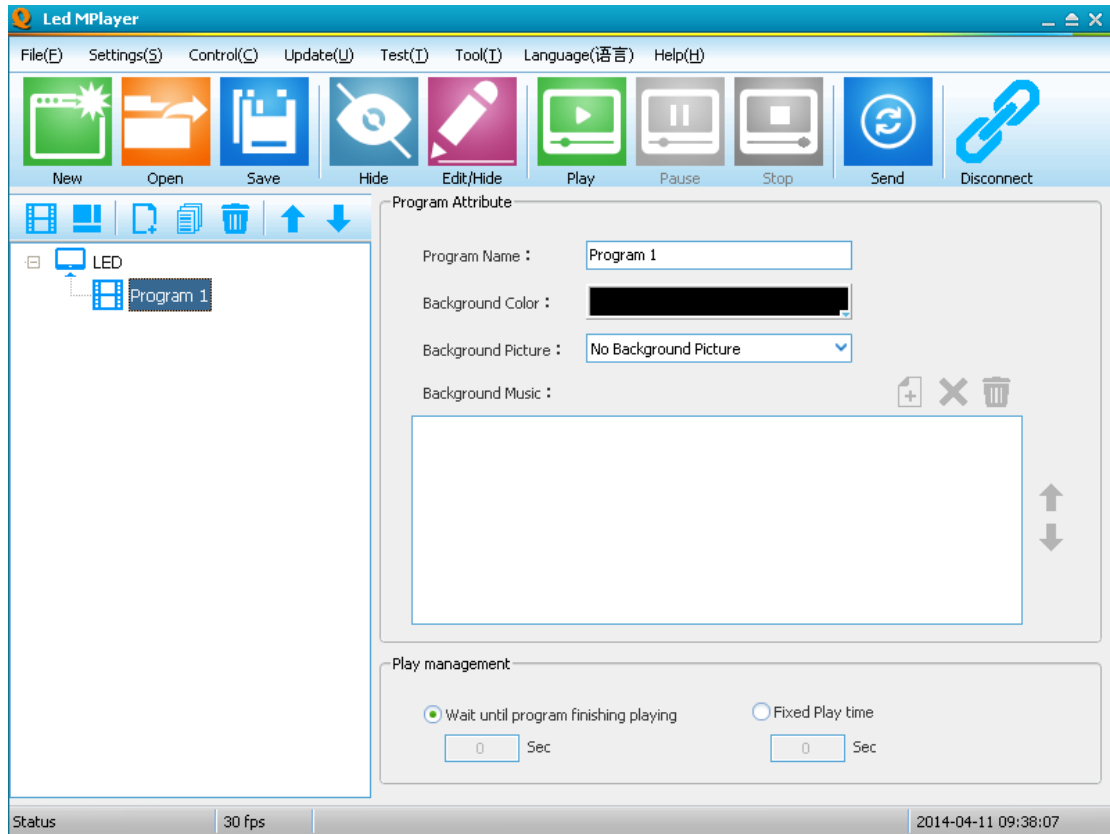


Item	Name	Feature
1	+5v Power Supply	Wide voltage input ,support 3.5V-6V
2	Gigabit(1000MB) LAN Port	Gigabit Network communication Port
3	Test Key	Test LED Panel
4	50Pin Output	Connect with HUB card (like HUB75 card)
5	50Pin Output	Connect with HUB card(like HUB75 card)

Main Parameter

Support range	For  : 128*384(by 1pcs of LS-Q1) , Max.65536*65536 pixels (Cascade connection)
	RG Single/Double color: 256*1024
Support	Play video/image/animation/text/date/time (at Synchronous mode)
Gray Level	65536
Refresh Rate	16KHZ
Frequency	0.2MHz~31.25MHz
Data group No.	16 Groups of Full color Signal
Number of cascade cards	65536PCS
Comm. mode	1000MB LAN (gigabit)
Memory	1GB for each LS-Q1
Working mode	Asynchronous & Synchronous two modes

Software :LED MPlayer



LS-Q1 controller cascaded for very long screen without sending card